



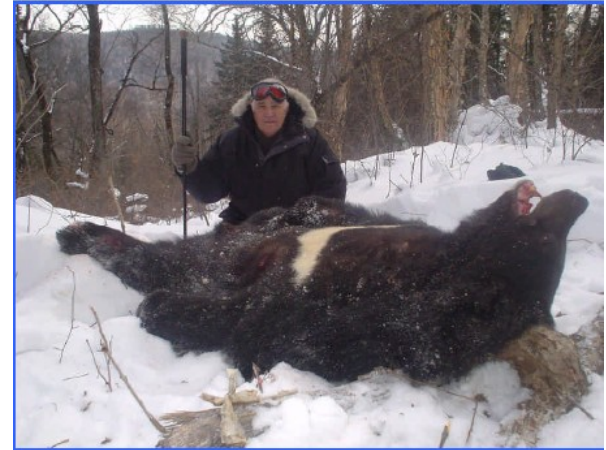
**Joel Latham**  
 3409 Redstone Drive  
 Arlington, Texas 76001-6507  
 U.S.A.  
 Phone: 817-465-3833  
 Cell: 817-371-4340  
 E-Mail: [latham@highmountainhunts.com](mailto:latham@highmountainhunts.com)  
 Web address:  
[www.highmountainhunts.com](http://www.highmountainhunts.com)

## RUSSIA

### HIMALAYAN BEAR

(Ussurian Tibetan)

This bear is black, with a white chest and is smaller, then a brown bear in its sizes. Weight 120 – 160 (max. 220) kg. The animal inhabits in the cedar-broad-leaf forests in the Southern part of the Khabarovsk region. The seasonal migrations from the areas of winter hibernation into the deciduous forests of the Sikhote-Alin mountain ridge eastern slope and back are characteristic for the white chest bear, inhabiting in this region. Usually the animals make their way by same routes. The places of winter hibernation are concentrated in areas with watersheds in the center. The population density of the Himalayan bear makes 7-10 individuals per 100 sq. km The animal feeds almost with the vegetative food - nuts, acorns and berries. It climbs on trees perfectly. Himalayan bear gets in hibernation in hollows of large trees.



**CITIES and other permit (s) may be required by U.S. Fish and Wildlife for endangered wildlife. No sale may be consummated until the necessary permit (s) has been obtained from the USFW Service.**

Hunting Areas	Season	Duration	Shooting Distance	Weather	Altitude of Hunt
Southern Khabarovsk region	Dec. 1 – Feb. 28	6 day trip 3 day hunt		Day: 14°F - 23°F Night: 22°F - -4 °F	

Route: Upon your arrival in Moscow you will be met and assisted through customs. You will be transferred to connecting airport (terminal) for next 7 hours flight to Khabarovsk. From there you go by 5 to 8 hours vehicle transfer to the hunting camp. Camp and accommodation: The camps are simple hunting house or cabins with cots. Our staff does everything possible to please our guests.

#### ITINERARY:

- Day 1 Flight Moscow – Khabarovsk 7 hours. Arrival in Khabarovsk. Vehicle transfer to hunting area - 5–8 hours.
- Day 2-4 Hunting, overnight in hunting lodges
- Day 5 Return to Khabarovsk. Overnight at the hotel
- Day 6 Departure Moscow

#### PRICE FROM KHABAROVSK

10-day trip, 7-day hunt 1x1, incl. 1 Himalayan bear	\$ 8,000
Refund if no opportunity for Bear	\$ 3,000
Non-hunter fee	\$ 2,500
Additional trophy fee:	
Second Bear	\$ 4,500

**Wounded and lost animal – no refund!**

**PRICE INCLUDES:** All transportation to and from the hunting region; all transportation in the hunting area; Accommodation and food in the camp during the whole tour; Service of professional guide; All serving staff including one PRO interpreter per group/camp; Trophy care and packing for shipment.

**PRICE EXCLUDES:**

Airline ticket from Moscow to Khabarovsk; visa; insurance; personal items; hotel and meals in Moscow or other towns before and after the hunt; excess luggage payment charged by airlines; the cost of any extra hunting days; the cost of additional trophies; gratuities to your hunting guide and staff; sightseeing program, a \$400 formalities package which includes invitation letter, firearm permit, hunting permit, state fee, veterinary certificate, meeting and transportation upon arrival in Moscow, service of an interpreter in Moscow; \$300 for CITES Export Permit, airline ticket from Moscow to Khabarovsk and return which is approximately \$1,000 economy and \$2,500 business class (price for airline ticket is subject to change); special food, cost of medications, immunizations, hospitalizations and services of doctors, charges for evacuation or rescue by ambulance, helicopter or airplane.

**RESERVATIONS AND PAYMENT:** per person in U.S. Dollars only A 50 % deposit is required to hold your hunt date. FINAL PAYMENT is due 60 days prior to hunt starting date. Cancellation 90 days prior to hunt starting date, the full deposit is refunded less \$1,500 per hunting client handling fee. Cancellation 90 to 61 days prior to hunt starting date, the full deposit is forfeited. Cancellation 60 days or less prior to hunt starting date, the total hunt cost is forfeited.

**Note:** you must bring your own sleeping bag, field thermos, sunglasses and one pair of long (up to the hip) waterproof boots.

